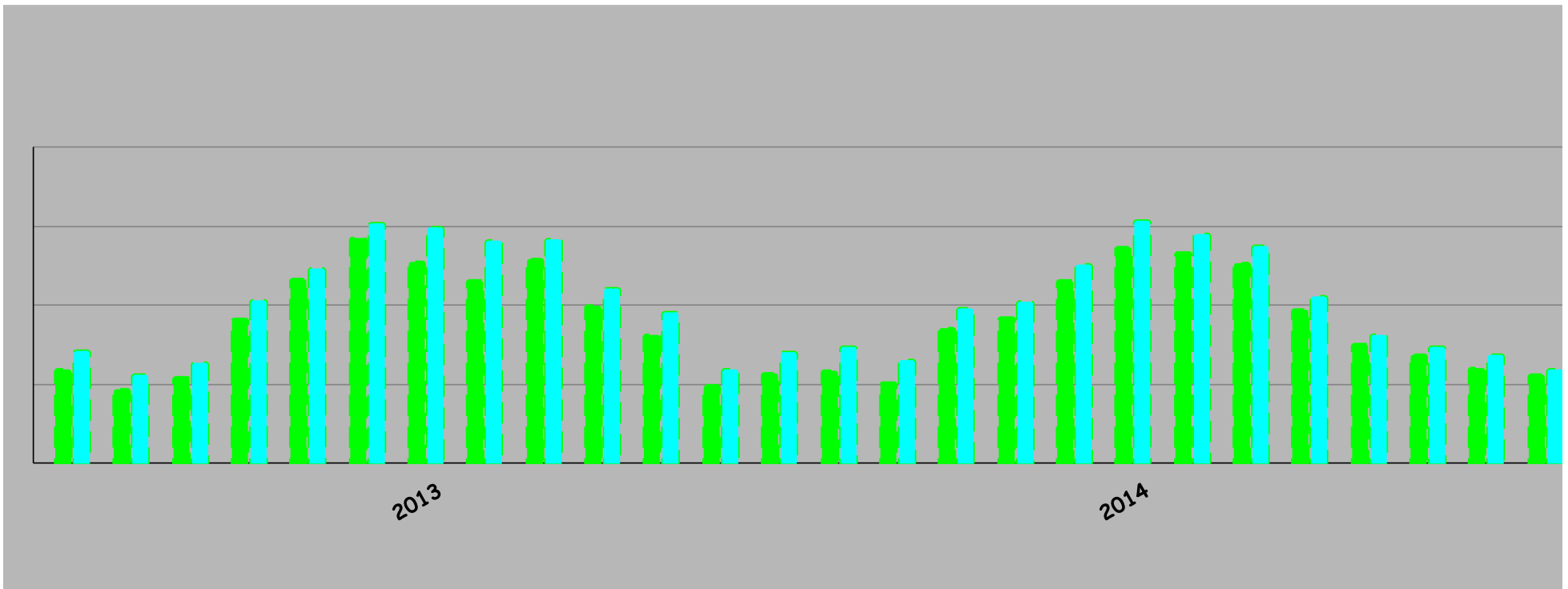


D-2 MAY 2025 EFFICIENCY REPORT

APPLE VALLEY HEIGHTS COUNTY WATER DISTRICT

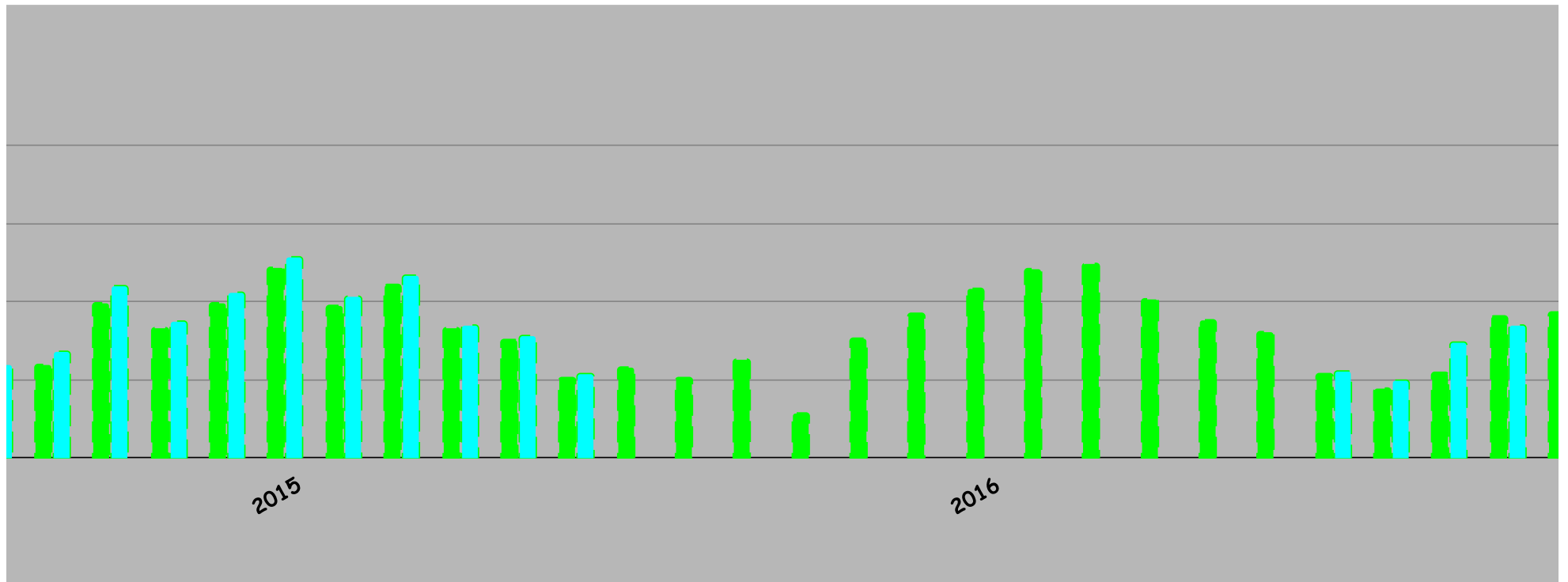
	2013				2014			
	Production (ft3)	Consumption (ft3)	Difference (ft3)	% Difference	Production (ft3)	Consumption (ft3)	Difference (ft3)	% Difference
JAN	284,630	237,483	47,147	16.6%	283,254	229,590	53,664	18.9%
FEB	223,212	187,583	35,629	16.0%	296,126	235,470	60,656	20.5%
MAR	254,826	216,333	38,493	15.1%	260,034	206,093	53,941	20.7%
APR	411,206	366,703	44,503	10.8%	391,177	342,759	48,418	12.4%
MAY	492,228	465,553	26,675	5.4%	410,041	368,273	41,768	10.2%
JUN	606,790	570,783	36,007	5.9%	503,981	461,816	42,165	8.4%
JUL	598,125	510,783	87,342	14.6%	614,710	547,948	66,762	10.9%
AUG	564,310	462,983	101,327	18.0%	579,666	532,812	46,854	8.1%
SEP	565,540	517,183	48,357	8.6%	549,454	506,020	43,434	7.9%
OCT	441,400	400,267	41,133	9.3%	422,696	389,051	33,645	8.0%
NOV	383,000	326,783	56,217	14.7%	324,660	301,020	23,640	7.3%
DEC	238,000	196,575	41,425	17.4%	294,075	273,501	20,574	7.0%
Avg	421,939	371,584	50,355	12.7%	410,823	366,196	44,627	11.7%
0	5,063,267	4,459,012	#DIV/0!	2	4,929,874	4,394,353	323654363.13%	1



D-2 MAY 2025 EFFICIENCY REPORT

APPLE VALLEY HEIGHTS COUNTY WATER DISTRICT

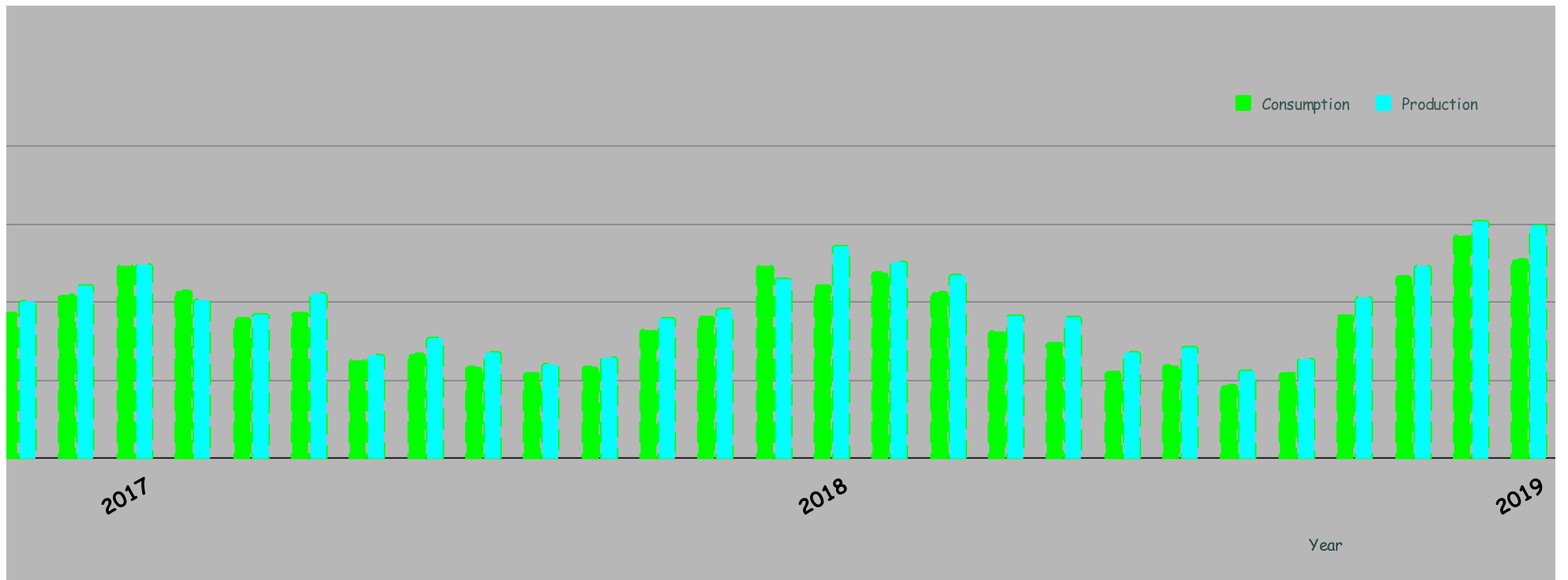
2015				2016				
Production (ft3)	Consumption (ft3)	Difference (ft3)	% Difference	Production (ft3)	Consumption (ft3)	Difference (ft3)	% Difference	Production (ft3)
273,409	241,753	31,656	11.6%	245,639	232,383	13,256		219,840
239,344	224,501	14,843	6.2%	212,370	203,483	8,887		198,480
270,247	239,168	31,079	11.5%	270,614	252,583	18,031		296,090
439,186	394,538	44,648	10.2%	119,046	113,294	5,752		340,020
348,491	332,582	15,909	4.6%	322,902	304,483	18,419		403,140
422,745	394,881	27,864	6.6%	397,423	367,583	29,840		441,750
512,766	487,083	25,683	5.0%	476,164	431,500	44,664		497,990
412,766	388,882	23,884	5.8%	507,499	481,920	25,579		404,548
465,609	441,183	24,426	5.2%	558,884	496,683	62,201	11.1%	369,930
338,632	330,583	8,049	2.4%	423,651	404,783	18,868		422,650
310,843	300,783	10,060	3.2%	354,360	351,400	2,960		265,020
214,964	203,683	11,281	5.2%	326,800	322,400	4,400		310,030
354,084	331,635	22,449	6.5%	351,279	330,208	21,071	5.5%	347,457
4,249,002	3,979,620	303092079.73%	1	4,215,352	3,962,495	543883946.72%	1	4,169,488



D-2 MAY 2025 EFFICIENCY REPORT

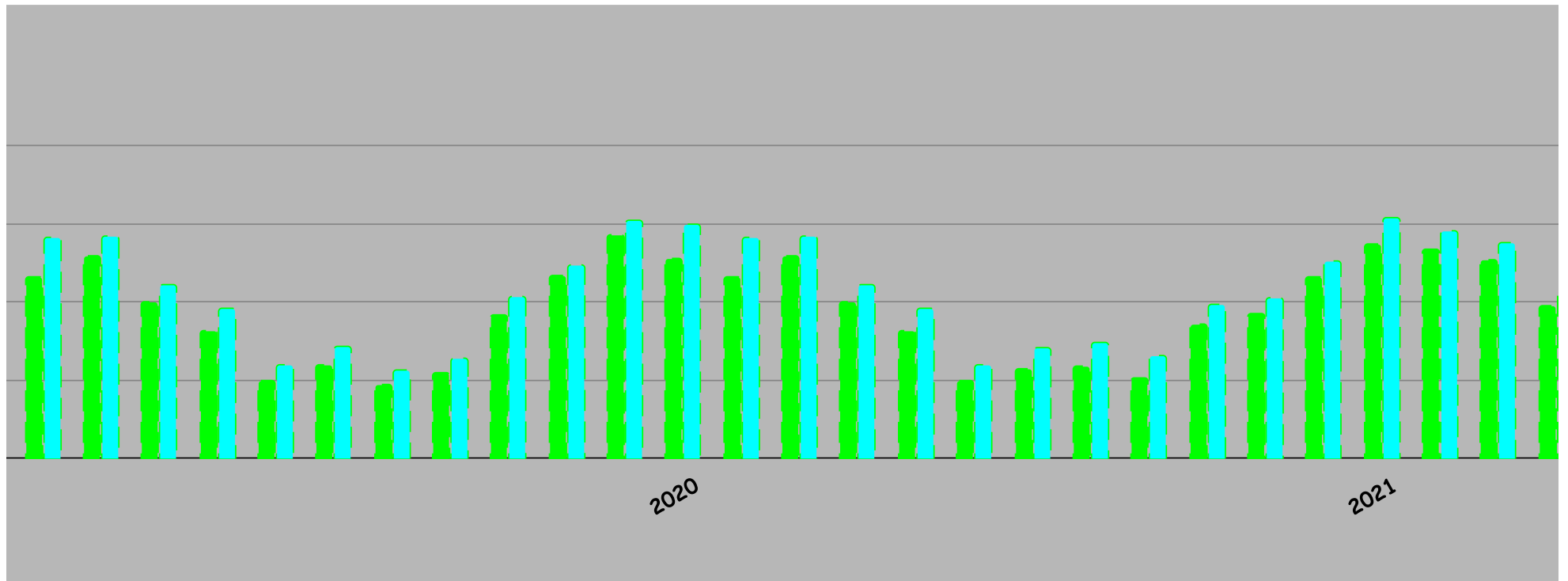
APPLE VALLEY HEIGHTS COUNTY WATER DISTRICT

2017			2018				2019	
Consumption (ft3)	Difference (ft3)	% Difference	Production (ft3)	Consumption (ft3)	Difference (ft3)	% Difference	Production (ft3)	Consumption (ft3)
213,000	6,840	3.1%	270,700	234,500	36,200	13.4%	284,630	237,483
176,120	22,360	11.3%	242,170	216,400	25,770	10.6%	223,212	187,583
216,760	79,330	26.8%	257,920	235,500	22,420	8.7%	254,826	216,333
361,800	-21,780	-6.4%	358,530	327,700	30,830	8.6%	411,206	366,703
370,800	32,340	8.0%	382,530	362,400	20,130	5.3%	492,228	465,553
420,800	20,950	4.7%	460,850	491,900	-31,050		606,790	570,783
491,700	6,290	1.3%	542,190	441,200	100,990	18.6%	598,125	510,783
427,600	-23,052	-5.7%	503,060	475,300	27,760	5.5%	564,310	462,983
357,800	12,130	3.3%	470,550	425,100	45,450	9.7%	565,540	517,183
373,000	49,650	11.7%	366,310	326,200	40,110	10.9%	441,400	400,267
252,300	12,720	4.8%	360,750	295,700	65,050	18.0%	383,000	326,783
267,000	43,030	13.9%	270,540	221,900	48,640	18.0%	238,000	196,575
327,390	28,564	8.9%	373,842	337,817	42,123	11.6%	421,939	371,584
3,928,680	627239969.07%	1	4,486,100	4,053,800	584137963.23%	Grand Total		



19

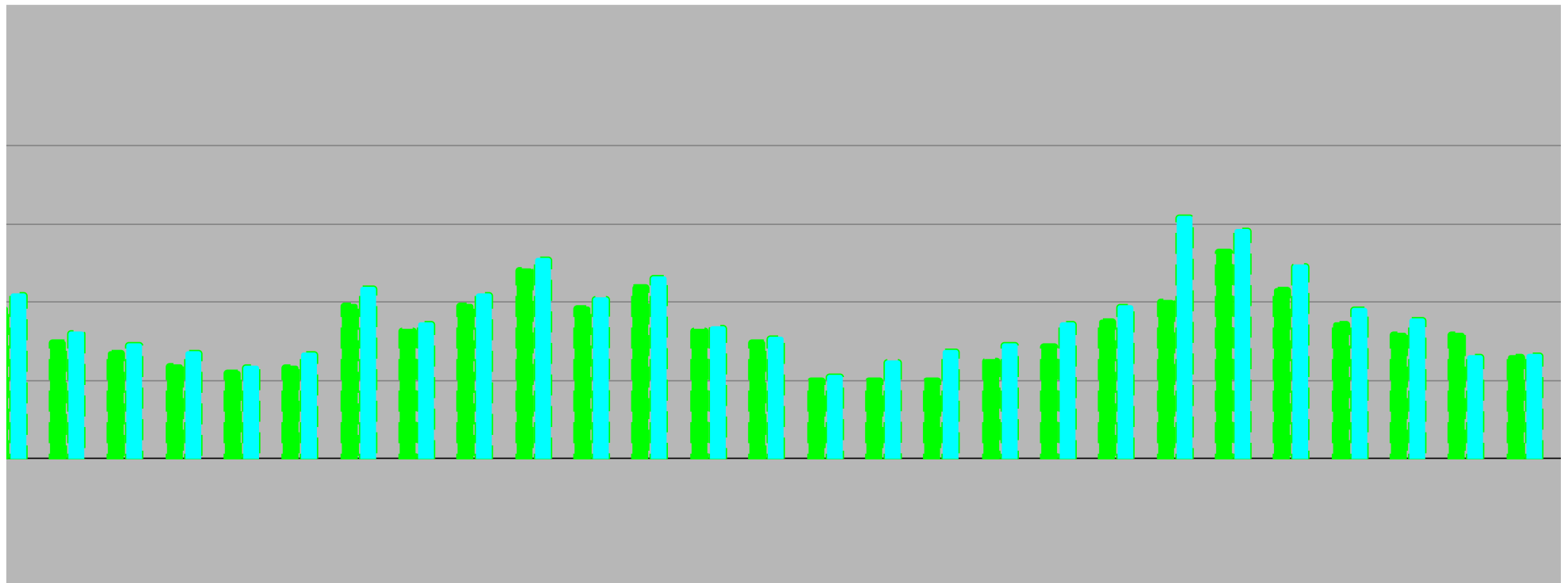
Difference (ft3)	% Difference	2020				2021			
		Production (ft3)	Consumption (ft3)	Difference (ft3)	% Difference	Production (ft3)	Consumption (ft3)	Difference (ft3)	
47,147	16.6%	284,630	237,483	47,147	16.6%	283,254	229,590	53,664	
35,629	16.0%	223,212	187,583	35,629	16.0%	296,126	235,470	60,656	
38,493	15.1%	254,826	216,333	38,493	15.1%	260,034	206,093	53,941	
44,503	10.8%	411,206	366,703	44,503	10.8%	391,177	342,759	48,418	
26,675	5.4%	492,228	465,553	26,675	5.4%	410,041	368,273	41,768	
36,007	5.9%	606,790	570,783	36,007	5.9%	503,981	461,816	42,165	
87,342	14.6%	598,125	510,783	87,342	14.6%	614,710	547,948	66,762	
101,327	18.0%	564,310	462,983	101,327	18.0%	579,666	532,812	46,854	
48,357	8.6%	565,540	517,183	48,357	8.6%	549,454	506,020	43,434	
41,133	9.3%	441,400	400,267	41,133	9.3%	422,696	389,051	33,645	
56,217	14.7%	383,000	326,783	56,217	14.7%	324,660	301,020	23,640	
41,425	17.4%	238,000	196,575	41,425	17.4%	294,075	273,501	20,574	
50,355	12.7%	421,939	371,584	50,355	12.7%	410,823	366,196	44,627	



D-2 MAY 2025 EFFICIENCY REPORT

APPLE VALLEY HEIGHTS COUNTY WATER DISTRICT

% Difference	2022			% Difference	2023			% Difference
	Production (ft3)	Consumption (ft3)	Difference (ft3)		Production (ft3)	Consumption (ft3)	Difference (ft3)	
18.9%	273,409	241,753	31,656	11.6%	252,391	206,000	46,391	18.4%
20.5%	239,344	224,501	14,843	6.2%	279,352	203,300	76,052	27.2%
20.7%	270,247	239,168	31,079	11.5%	295,772	253,400	42,372	14.3%
12.4%	439,186	394,538	44,648	10.2%	348,565	292,230	56,335	16.2%
10.2%	348,491	332,582	15,909	4.6%	391,081	356,800	34,281	8.8%
8.4%	422,745	394,881	27,864	6.6%	620,704	406,500	214,204	34.5%
10.9%	512,766	487,083	25,683	5.0%	585,895	532,800	53,095	9.1%
8.1%	412,766	388,882	23,884	5.8%	495,830	435,100	60,730	12.2%
7.9%	465,609	441,183	24,426	5.2%	386,915	348,100	38,815	10.0%
8.0%	338,632	330,583	8,049	2.4%	360,157	320,620	39,537	11.0%
7.3%	310,843	300,783	10,060	3.2%	265,031	323,400	-58,369	-22.0%
7.0%	214,964	203,683	11,281	5.2%	267,334	264,300	3,034	1.1%
11.7%	354,084	331,635	22,449	6.5%	379,086	328,546	60,441	14.8%



2024				2025			
Production (ft3)	Consumption (ft3)	Difference (ft3)	% Difference	Production (ft3)	Consumption (ft3)	Difference (ft3)	% Difference
360,157	242,500	117,657	32.7%	277,451	284,700	-7,249	-2.6%
320,586	237,100	83,486	26.0%	264,260	272,000	-7,740	-2.9%
267,334	24,700	242,634	90.8%	273,666	246,300	27,366	10.0%
261,100	274,100	-13,000	-5.0%	330,447	237,200	93,247	28.2%
235,143	461,300	-226,157	-96.2%	389,557	275,375	114,182	29.3%
365,515	458,500	-92,985	-25.4%			0	#DIV/0!
333,535	525,100	-191,565	-57.4%			0	#DIV/0!
465,174	564,000	-98,826	-21.2%			0	#DIV/0!
483,048	353,500	129,548	26.8%			0	#DIV/0!
360,157	320,620	39,537	11.0%			0	#DIV/0!
320,986	323,400	-2,414	-0.8%			0	#DIV/0!
267,334	264,300	3,034	1.1%			0	#DIV/0!
336,672	337,427	102,649	31.4%	307,076	263,115	23,480	22.5%

