

**Inspection Report for  
Apple Valley Heights CWD  
Apple Valley, CA**



**20KG Steel On-Grade  
West Tank**

**Date Completed: January 9, 2023**

**Commercial Dive Team:**

**Diver – Colin Lafever  
Dive Controller – Ceasar Hernandez  
Tender – Noah Coleman**

## **Scope of Work:**

Our team completed sediment removal using underwater vacuum equipment. Sediment depth, averaging 2 inches, was removed from the tank floor. When the cleaning process was finished, a full visual inspection was performed of the tank interior and all interior fixtures. The team also performed a full visual inspection of the tank exterior and all attached fixtures. The details of the inspection findings are included in the report below.

## **Summary of the Inspection:**

### **Exterior Inspection**

1. The team had to go portable to get to the tank. (In a gated area)
2. The wall was found in good condition with minor oxidation, moderate sags & runs in the coating and heavy chalking noted.
3. The overflow was found in fair condition with moderate chalking, heavy de-lamination, oxidation, 3% intergranular corrosion and 10% uniform surface corrosion noted.
4. The manway was found secure and in good condition with minor oxidation and heavy chalking noted.
5. The water level indicator was found in poor condition with 3% uniform surface corrosion noted and the cable and guidelines unattached.
6. The ladder was found secure, OSHA approved and in good condition with minor de-lamination, oxidation, moderate chalking and 0.1% uniform surface corrosion noted.
7. The uncoated roof was found in good condition
8. The uncoated hatch was found bolted down with no gasket present and in good condition.
9. The vent was found in good condition with minor oxidation and 0.01% uniform surface corrosion noted.

### **Key**

**Excellent – Like new, no repairs needed**

**Good – Cosmetic problems, repair if utility wants**

**Fair – Minor problems, repairs needed**

**Poor – Major problems, fix now**

## **Summary of the Inspection:**

### **Interior Inspection**

1. The interior roof was found in good condition with minor oxidation and 0.01% intergranular corrosion noted.
2. The ladder was found secure and in good condition with minor staining and 0.3% uniform surface corrosion noted.
3. The overflow was found in good condition with minor corrosive staining, minor to moderate oxidation and 0.01% uniform surface corrosion noted.
4. The wall was found in good condition with heavy staining, 1/32 inch deep pitting, 0.01% rust noduling and 0.3% uniform surface corrosion noted.
5. The floor was found in poor condition with heavy staining, 1/32 inch deep pitting, 33% rust noduling and greater than 50% uniform surface corrosion noted.
6. The manway was found in good to fair condition with heavy staining, 0.01% rust noduling and 16% uniform surface corrosion noted.
7. The common inlet/outlet was found in good condition with moderate to heavy staining, 0.01% rust noduling and 1% uniform surface corrosion noted.
8. The drain was found in good condition with heavy staining, 0.3% rust noduling and 3% uniform surface corrosion noted.
9. The float was found in poor condition with the cable and guidelines unattached.
10. The support column was found secure and in good condition with minor oxidation and moderate staining noted.

### **Recommendations:**

1. Schedule a blast and recoat of the interior or replace the floor as soon as budgets will allow. If, within 3 years, the recoating or replacing has not been completed, schedule a follow-up clean and inspect as recommended by the AWWA.

### **Key**

**Excellent – Like new, no repairs needed**

**Good – Cosmetic problems, repair if utility wants**

**Fair – Minor problems, repairs needed**

**Poor – Major problems, fix now**



# Inland Potable Services, Inc.

## Exterior Inspection Report



### Wall Panel Condition

Coating Condition: Good  
 Seams/Welds Condition: Good  
 Corrosion Present? Y  N   
 Oxidation Present? Y  N   
 De-lamination Present? Y  N   
 Dents Present? Y  N   
 Holes Present? Y  N   
 Signs Of Leaking? Y  N

Summary: The wall was found in good condition with minor oxidation, moderate sags & runs in the coating and heavy chalking noted.



### Overflow Structure Condition

Coating Condition: Fair/Poor  
 Seams/Welds Condition: Good  
 Stand Off Supports Condition: Good  
 Corrosion Present? Y  N   
 Oxidation Present? Y  N   
 De-lamination Present? Y  N   
 Directly Connected To Sewer or Drain? Y  N  N/A   
 End Cap Present? Y  N   
 Hinge and Cap Condition: Fair  
 #24 mesh Screen Present? Y  N   
 Condition: N/A

Summary: The overflow was found in fair condition with moderate chalking, heavy de-lamination, oxidation, 3% intergranular corrosion and 10% uniform surface corrosion noted.



### Manway Condition

Coating Condition: Good  
 Weld/Seam Condition: Good  
 Corrosion Present? Y  N   
 Oxidation Present? Y  N   
 De-lamination Present? Y  N

Summary: The manway was found secure and in good condition with minor oxidation and heavy chalking noted.



### Water Level Indicator Condition

Marker Condition: Poor

Attached & Accurate? Y  N

Marker Board Condition: Fair/Poor

Is the level reading visible? Y  N

Pulley Condition: Poor

Attached Properly? Y  N

Cable Condition: Poor

Attached Properly? Y  N

Hardware Condition: Fair

Corrosion Present? Y  N

Summary: The water level indicator was found in poor condition with 3% uniform surface corrosion noted and the cable and guidelines unattached.



### Access Ladder Condition

Ladder Type: Steel bolted

Is Ladder and Safety Climb OSHA Approved? Y  N

Is Vandal Guard Present? Y  N

Locked? Y  N  N/A

Safety Climb Type: N/A

Safety Climb Condition: N/A

Is Top Of Tank Easily Accessible? Y  N

Coating Condition: Good

Seams/Welds Condition: Good

Stand Off Supports Condition: Good

Corrosion Present? Y  N

Oxidation Present? Y  N

De-lamination Present? Y  N

Summary: The ladder was found secure, OSHA approved and in good condition with minor de-lamination, oxidation, moderate chalking and 0.1% uniform surface corrosion noted.



### Roof Condition

Roof Type: Pitched

Coating Condition: N/A

Seams/Welds Condition: Good

Corrosion Present? Y  N

Oxidation Present? Y  N

De-lamination Present? Y  N

Low Spots Present? Y  N

Holes in Roof? Y  N

Cathodic Protection Plates Present? Y  N

Sealed Edges: Y  N  N/A

Loose Plates? Y  N  N/A

Missing Plates? Y  N  N/A

Summary: The uncoated roof was found in good condition.



### Access Hatch Condition

Coating Condition: N/A  
 Seams/Welds Condition: Good  
 Corrosion Present: Y  N   
 Oxidation Present? Y  N   
 De-lamination Present? Y  N   
 Hatch Size: 18 inch round  
 Riser Height: 4 inches Lid Height: 1 inch  
 Hatch Locked? Y  N  bolted

Hinge Condition: N/A  
 Gasket Present? Y  N   
 Intact? Y  N  N/A   
 Insects, Dirt Or Debris Present Under Hatch? Y  N

Summary: The uncoated hatch was found bolted down with no gasket present and in good condition.



### Vent Condition

Coating Condition: Good  
 Seams/Welds Condition: Good  
 Corrosion Present: Y  N   
 Oxidation Present? Y  N   
 De-lamination Present? Y  N   
 #24 Mesh Screen in Place? Y  N   
 Condition: Good  
 All Openings Sealed? Y  N   
 Cap Condition: Good

Summary: The vent was found in good condition with minor oxidation and 0.01% uniform surface corrosion noted.





# Inland Potable Services, Inc.

## Interior Inspection Report



### Roof Condition

Coating Condition: Good  
Welds/seam Condition: Good  
Corrosion Present On Panels? Y  N   
Oxidation Present? Y  N   
De-lamination Present? Y  N

Summary: The interior roof was found in good condition with minor oxidation and 0.01% intergranular corrosion noted.



### Ladder Condition

Ladder Location: 12 o'clock  
Coating Condition: N/A  
Weld/Seam Condition: Good  
Supports Condition: Good  
Corrosion Present? Y  N   
Oxidation Present? Y  N   
De-lamination Present? Y  N

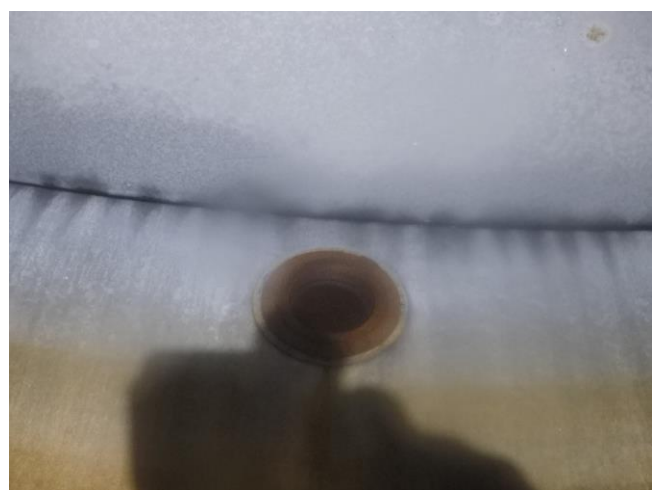
Summary: The ladder was found secure and in good condition with minor staining and 0.3% uniform surface corrosion noted.



### Overflow Condition

Overflow Location: 10 o'clock  
Coating Condition: N/A  
Weld/Seam Condition: Good  
Corrosion Present? Y  N   
Oxidation Present? Y  N   
De-lamination Present? Y  N

Summary: The overflow was found in good condition with minor corrosive staining, minor to moderate oxidation and 0.01% uniform surface corrosion noted.



### Wall Panel Condition

Coating Condition: N/A  
Welds/seam Condition: Good  
Corrosion Present On Panel? Y  N   
Oxidation Present? Y  N   
De-lamination Present? Y  N   
Is Biofilm Present: Y  N   
Any irregularities or structural deficiencies? Y  N

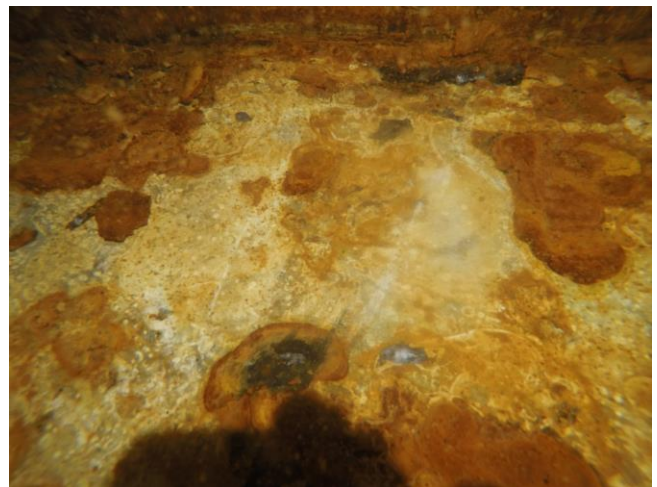
Summary: The wall was found in good condition with heavy staining, 1/32 inch deep pitting, 0.01% rust noduling and 0.3% uniform surface corrosion noted.



### Floor Condition

Coating Condition: N/A  
Welds/seam Condition: Fair  
Corrosion Present? Y  N   
Oxidation Present? Y  N   
De-lamination Present? Y  N   
Any irregularities or structural deficiencies? Y  N

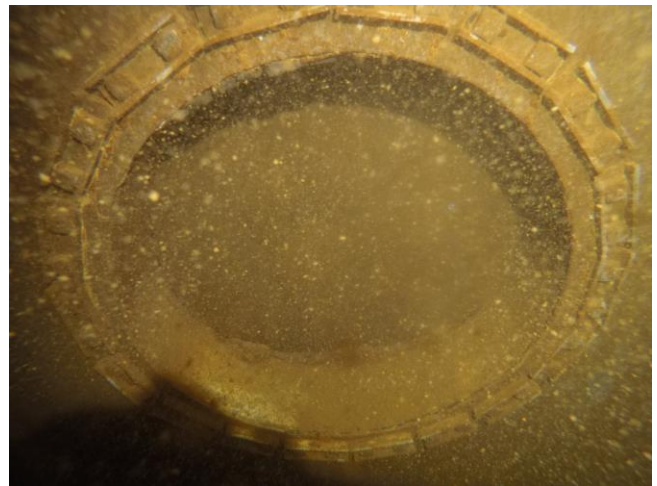
Summary: The floor was found in poor condition with heavy staining, 1/32 inch deep pitting, 33% rust noduling and greater than 50% uniform surface corrosion noted.



### Manway Condition

Manway Location(s): 9 o'clock  
Coating Condition: N/A  
Weld/Seam Condition: Good  
Corrosion Present? Y  N   
Oxidation Present? Y  N   
De-lamination Present? Y  N

Summary: The manway was found in good to fair condition with heavy staining, 0.01% rust noduling and 16% uniform surface corrosion noted.





### Inlet and Outlet Condition

Common Inlet/Outlet? Y  N

Location: 12:10 o'clock

Coating Condition: N/A

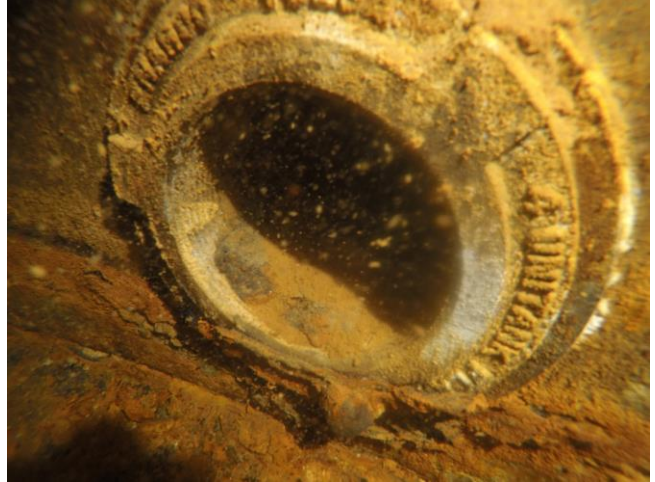
Weld/Seam Condition: Good

Corrosion Present? Y  N

Oxidation Present? Y  N

De-lamination Present? Y  N

Summary: The common inlet/outlet was found in good condition with moderate to heavy staining, 0.01% rust noduling and 1% uniform surface corrosion noted.



### Drain Condition

Drain Location: 3 o'clock

Coating Condition: N/A

Weld/Seam Condition: Good

Corrosion Present? Y  N

Oxidation Present? Y  N

De-lamination Present? Y  N

Summary: The drain was found in good condition with heavy staining, 0.3% rust noduling and 3% uniform surface corrosion noted.



### Float Condition

Float Location: 12:30 o'clock

Guidelines Condition: Poor

Attached Properly? Y  N

Cable Condition: Poor

Attached Properly? Y  N

Float Condition: Poor

Sealed? Y  N

Hardware Condition: Poor

Corrosion Present? Y  N

Summary: The float was found in poor condition with the cable and guidelines unattached.



### Support Column Condition

Number Of Columns: 1

Coating Condition: N/A

Welds/seam Condition: Good

Corrosion Present? Y  N

Oxidation Present? Y  N

De-lamination Present? Y  N

Summary: The support column was found secure and in good condition with minor oxidation and moderate staining noted.



# Tank Layout

